

## SUPREME® Standard Aft Seal (STA)



*Effective Separation  
of Water & Oil*

Based on the success of the SUBLIME Seal, IHC Lagersmit developed the SUPREME Range. The product line entered the market in the 1980's. The SUPREME Standard is the basic version within the SUPREME range.

### **SUPREME Standard Seal**

This seal is available in both Forward and Aft seal design. The SUPREME Standard Aft seal is equipped with three NBR lip seals: one oil repellent and two water repellent lip seals. The housing parts are made of bronze. The lip seals run on a chrome steel liner.

### **SUPREME Special Design**

We know every application is different. The SUPREME seal is designed to fit specific customer needs. At the customer's request, IHC Lagersmit designs and develops innovative tailor-made solutions. Even very special hybrid versions of LIQUIDYNE and SUPREME seals are designed. Examples of these applications are available on request.

### **Applications**

SUPREME STA applications include conventional shafts, thrusters, pods, dynamic positioning systems and controllable-pitch propeller systems.

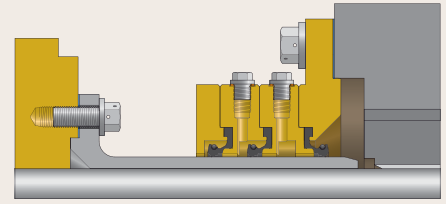
### **Options**

- Installation commissioning
- Split housing parts
- Liner: split version
- Liner: hard metal layer
- Liner: ceramic layer
- Lip seals: FPM
- Hastelloy lip seal springs
- Dirt barrier
- Dirt barrier with protective cover
- Cathodic protection
- Distance ring
- Grease lubrication
- Oil lubrication
- Netcutter
- Wire winder

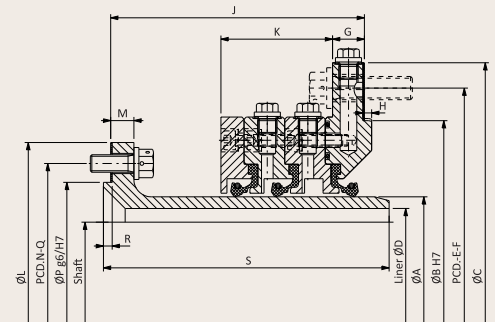
## SUPREME Standard Aft Seal (STA)

A	155	170	190	200	220	240	260	280	300	330	355	380	400
D	145	160	180	190	208	228	248	264	284	314	337	362	381
B	240	255	275	285	305	345	365	385	405	435	475	500	520
C	305	320	340	350	370	425	445	465	485	515	565	590	610
E	275	290	310	320	340	390	410	430	450	480	525	550	570
F	8x	8x	8x	8x	8x	12x	12x	12x	12x	12x	12x	12x	12x
	M12x	M12x	M12x	M12x	M12x	M16x	M16x	M16x	M16x	M16x	M20x	M20x	M20x
	40	40	40	40	40	55	55	55	55	55	60	60	60
G	17	17	17	17	17	22	22	22	22	22	22	22	22
H	5	5	5	5	5	5	5	5	5	5	5	5	5
J	160	160	160	160	160	170	175	175	175	175	195	195	200
K	77	77	77	77	77	77	77	77	77	77	83	83	83
L	214	240	270	280	300	320	340	360	375	425	450	480	500
M	11	11	13	13	13	13	16	16	16	16	16	16	21
N	194	220	240	250	270	290	310	330	346	390	416	440	460
Q	8x	8x	8x	8x	8x	8x	8x	12x	12x	12x	12x	12x	12x
	M8x	M8x	M12x	M12x	M12x	M12x	M12x	M12x	M12x	M12x	M16x	M16x	M16x
	20	20	30	30	30	30	30	30	30	30	35	35	35
P	175	200	214	224	240	260	284	300	320	360	384	406	424
R	5	5	5	5	5	5	5	5	5	6	6	6	6
S	186	186	186	186	186	194	197	197	197	198	219	219	225
Weight (kg)	35	37	42	44	48	66	72	80	85	98	120	130	35
Article no.													
56261 xxx	903	904	905	906	907	908	909	910	911	912	913	914	915

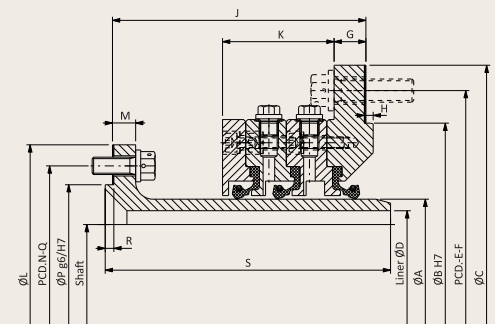
A	420	450	480	500	530	560	600	630	670	710	750	800	850
D	400	428	457	476	504	532	570	598	635	672	710	750	795
B	540	575	605	625	655	700	740	770	810	865	905	960	1010
C	630	675	705	725	755	820	860	890	930	990	1030	1090	1140
E	590	630	660	680	710	765	805	835	875	930	970	1030	1080
F	12x	12x	12x	12x	12x	12x	12x	12x	12x	16x	16x	20x	20x
	M20x	M20x	M20x	M20x	M24x	M24x	M24x	M24x	M24x	M24x	M24x	M24x	M24x
	60	65	65	65	75	75	75	75	75	75	75	75	75
G	22	22	22	22	22	24	24	24	24	26	26	26	26
H	5	5	5	5	5	5	5	5	5	5	5	5	5
J	200	225	225	225	240	240	245	245	280	280	310	310	310
K	83	83	83	83	83	95	95	95	95	107	111	111	111
L	520	550	590	600	630	675	700	760	820	840	885	945	1000
M	21	21	21	21	21	21	26	26	26	26	31	31	31
N	486	510	550	560	590	630	660	710	750	790	836	890	950
Q	12x	12x	12x	12x	12x	12x	12x	12x	12x	16x	16x	16x	16x
	M16	M16	M20x	M20x	M20x	M20x	M24	M24	M24	M24	M24	M24	M24
	40	40	45	45	45	45	55	55	55	55	55	55	55
P	450	476	510	526	550	588	620	670	710	740	780	825	870
R	6	7	7	7	7	8	8	8	9	9	9	9	9
S	225	250	250	250	250	262	262	268	268	310	311	348	348
Weight (kg)	150	175	190	200	210	270	310	340	370	440	500	560	630
Article no.													
56261 xxx	916	917	918	919	920	921	922	923	924	925	926	927	928



### Cross-section SUPREME STA



### SUPREME STA (oil-grease lubricated)



### SUPREME STA

- A – Shaft centered liner
- C – Wear-resistant coating (ceramic or hard metal layer)
- D – Distance ring 2/2
- F – Static sealing between liner and FP propeller
- K – Dirt barrier with protective cover
- L – Dirt barrier
- N – FPM lip seals
- P – Cathodic protection (zinc blocs)
- O – Oil lubrication / condition monitoring
- G – Grease lubrication (high speed applications)

### IHC Lagersmit

Smitweg 6  
P.O. Box 5  
2960 AA Kinderdijk, The Netherlands

T +31 78 691 04 72  
F +31 78 691 04 77  
sales.lagersmit@ihcmerwede.com  
www.ihclagersmit.com  
www.ihcmerwede.com