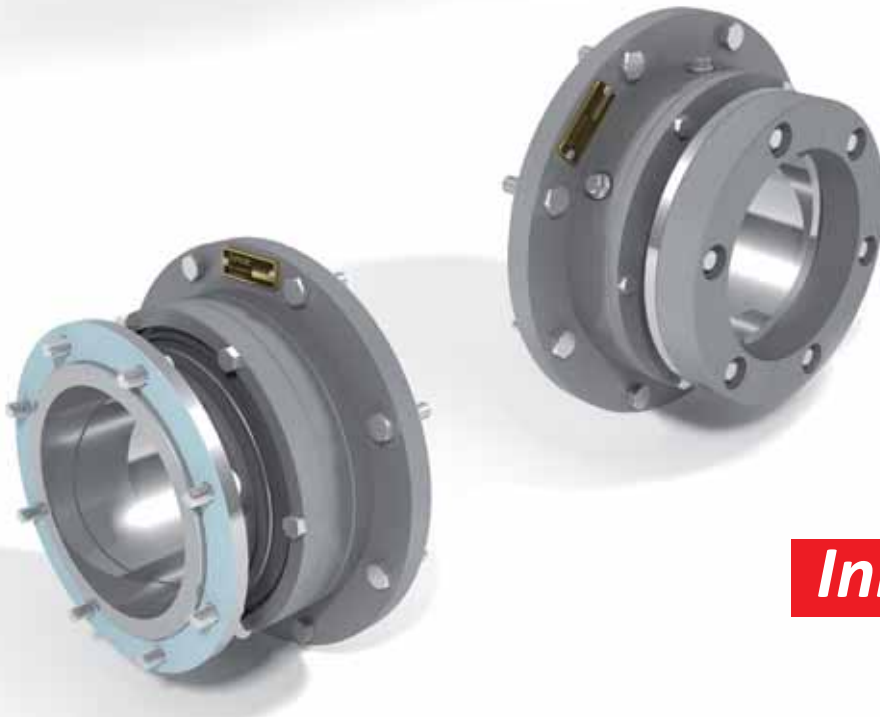


SUPREME® LD Aft and Forward Seal (LDA and LDF)



*Designed for
Inland Shipping*

The SUPREME LD is especially designed for inland shipping and small seagoing vessels.

SUPREME LD Aft and Forward Seal

The LD design is comparable with the SUPREME Standard design and is equipped with cast iron housing parts. The seal can be delivered in both oil and grease lubricated design. The standard SUPREME LD Aft Seal is equipped with three lip seals: two water repellant lip seals and one oil or grease repellant lip seal. The standard SUPREME LD Forward Seal is equipped with two oil or grease repellant lip seals.

SUPREME Special Design

We know every application is different. The SUPREME seal is designed to fit specific customer needs. At the customer's request, IHC Lagersmit designs and develops innovative tailor-made solutions. Even very special hybrid versions of LIQUIDYNE and SUPREME seals are designed. Examples of these applications are available on request. An extensive set of options is available to meet varying customer demands. The most commonly used options are sandbarrier FPM lip seals and the application of a hard metal layer on the liner. This combination ensures absolute minimum wear, which minimizes maintenance. The benefit? Low cost of ownership.

Applications

SUPREME LD applications include conventional stern tubes of inland vessels, small tugs, small work boats and small seagoing vessels.

Options

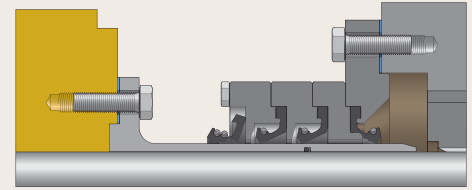
- Installation commissioning
- Split housing parts
- Liner: split version
- Liner: hard metal layer
- Liner: ceramic layer
- Lip seals: FPM
- Hastelloy lip seal springs
- Dirt barrier
- Dirt barrier with protective cover
- Cathodic protection
- Distance ring
- Grease lubrication
- Oil lubrication
- Netcutter
- Wire winder

SUPREME LD Aft and Forward Seal (LDA and LDF)

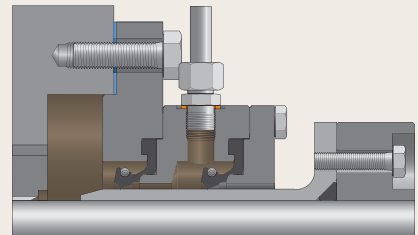
A	D	B (h7)	C	E	F	J	K	L
110	70-100	185	240	215	8xM10	150	22	165
125	101-115	195	250	225	8xM10	150	22	175
140	116-130	220	280	250	8xM10	150	22	195
155	131-145	240	305	275	8xM10	160	22	214
170	146-160	255	320	290	8xM12	160	22	240
190	161-180	275	340	310	8xM12	160	22	270
200	181-190	285	350	320	8xM12	160	22	280
220	191-208	305	370	340	8xM12	160	22	300
240	209-228	345	425	390	12xM16	170	22	320
260	229-248	365	445	410	12xM16	175	22	340

M	N	O	P(h7)	R	S	T	U	V
11	145	8xM8	125	5	176	135	150	165
11	155	8xM8	135	5	176	135	150	180
11	175	8xM8	150	5	176	135	150	200
11	194	8xM8	175	5	186	135	150	210
11	220	8xM12	200	5	186	135	150	230
13	240	8xM12	214	5	186	140	155	250
13	250	8xM12	224	5	186	145	160	260
13	270	8xM12	240	5	186	145	160	280
13	290	8xM12	260	5	194	150	165	300
16	310	8xM12	284	5	197	150	165	320

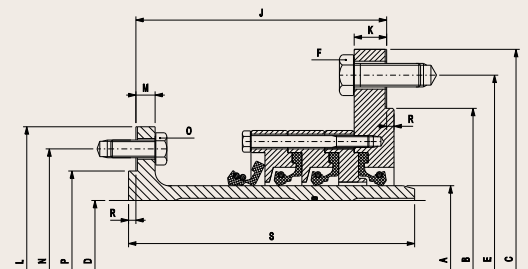
- A – Shaft centered liner
- C – Wear-resistant coating (ceramic or hard metal layer)
- D – Distance ring 2/2
- F – Static sealing between liner and FP propeller
- K – Dirt barrier with protective cover
- L – Dirt barrier
- N – FPM lip seals
- P – Cathodic protection (zinc blocs)
- G – Grease lubrication



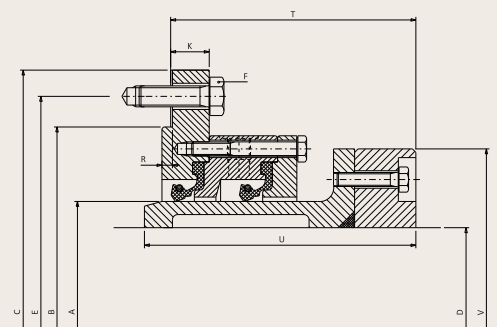
Cross-section SUPREME LDA



Cross-section SUPREME LDF



SUPREME LDA



SUPREME LDF

IHC Lagersmit

Smitweg 6
P.O. Box 5
2960 AA Kinderdijk, The Netherlands

T +31 78 691 04 72
F +31 78 691 04 77
sales.lagersmit@ihcmerwede.com
www.ihclagersmit.com
www.ihcmerwede.com